

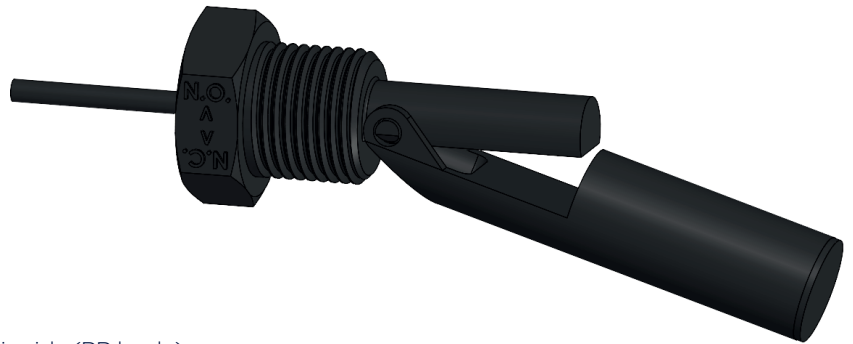
## TSS1A SIDE MOUNT LEVEL SWITCH

### GENERAL FEATURES

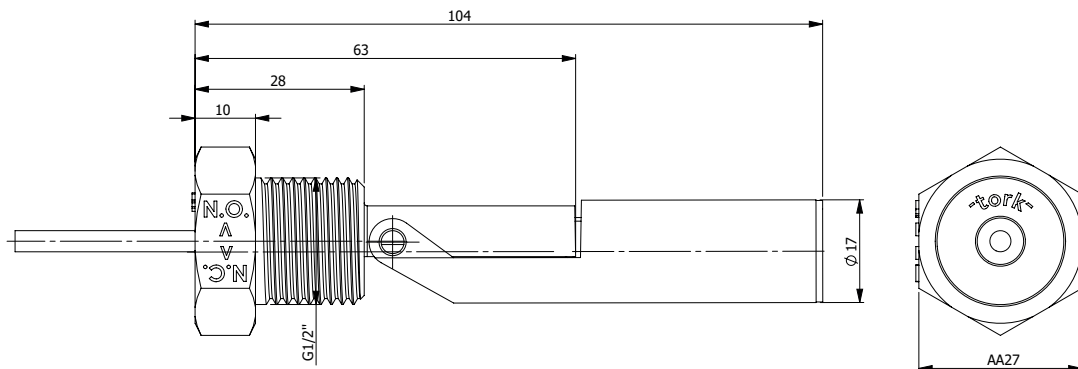
With a robust mechanical hinged float, the TSS1A is ideal for use in applications requiring reliable monitoring under strong flows. Available with two different mounting options. It is ideal for use in a range of applications and industries, such as the detection of liquid levels in water treatment vessels, mechanical engineering and plant construction. The switching function can be reversed by rotating the float switch, making this a highly flexible and cost-effective solution. With its reed sensor-based level measurement and mechanical hinge, it provides durable use even in strong flows.

### Technical Features

Body material	: PP or PA12
Mounting	: G1/2"
Connection	: 3 m PVC cable outlet
Contact form	: Normally open (N.O.) or normally closed (N.C.)
Temperature range	: -25 °C to +105 °C
Switching voltage	: Max. 200 VDC/ 250 VAC
Switching current	: 1.5 A
Conveying current	: 2 A
Protection class	: IP68
Usage Areas	: Water, oil and non-aggressive liquids (PP body) Aggressive liquids, acid, base, alkalis, water etc. (PA12 body)
Contact	: If the floater is hanging down while connecting to the tank, N.O. position If the buoy is facing up while connecting to the tank, N.C. position



### Dimensions:



### Connection Diagram:

