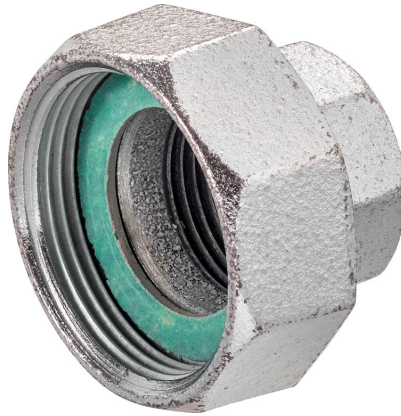


Pipe connector for globe valve with external thread

- internal thread Rp to internal thread G
- incl. gasket



### Type Overview

Type	DN	Rp [""]	G [""]	B [mm]	Suitable for	Weight
ZH4515	15	1/2	1 1/8	21	H411B...H415B H511B...H515B	0.18 kg
ZH4520	20	3/4	1 1/4	23	H420B H520B	0.21 kg
ZH4525	25	1	1 1/2	26	H425B H525B	0.35 kg
ZH4532	32	1 1/4	2	30	H432B H532B	0.43 kg
ZH4540	40	1 1/2	2 1/4	32	H440B H540B	0.63 kg
ZH4550	50	2	2 3/4	35	H450B H550B	0.10 kg

### Technical data

**Materials** Used Materials Malleable cast iron, galvanized

### Safety notes



- This accessory has been designed for use in stationary heating, ventilation and air-conditioning systems and must not be used outside the specified field of application, especially in aircraft or in any other airborne means of transport.
- Only authorised specialists may carry out installation. All applicable legal or institutional installation regulations must be complied during installation.
- The accessory may not be disposed of as household refuse. All locally valid regulations and requirements must be observed.

### General notes

**Delivery notes** In the ZH45.. scope of delivery: union nut (G thread), insert (Rp thread), gasket

### Dimensions

#### Dimensional drawings

